

PERSONNEL, VEHICLE, WASTE/TRASH RADIATION AND CHEMICAL PORTAL / INTERDICTION MONITOR PORTABLE or FIXED,

Model Series ~ PPVM-TA SERIES

PPVM-TA ~ PPVM-TA-P ~ PPVM-TA-1 ~ PPVM-TA-3 ~ PPVM-TA-5ES

PPVM-TA-CHEM-WDE ~ PPVM-TA-CHEM-IWC

FEATURES:

PPVM-TA Series

- DETECTORS: PORTABLE OR INSTALLED WALL OR DOORWAY
- CAN BE SET TO ANY WIDTH; QUICK SET UP
- DATA DISPLAY – LOCAL AND/OR REMOTE
- POWER: RECHARGEABLE BATTERIES or AC
- DYNAMIC BACKGROUND SUBTRACT
- CONTINUOUS OPERATION: "SET & FORGET"
- COMPLETELY WEATHER PROOF
- DATA ARCHIVE / RETRIEVAL VIA USB, ETHERNET; RS232

OPTIONS:

- VIDEO CAPTURE – REAL-TIME CAPTURE & DISPLAY UPON ALARM
- LICENSE PLATE CAPTURE
- WIRELESS REMOTE NOTIFICATION PHONE, EMAIL, TEXT, ETC.
- IP64

RADIATION - FIVE MODELS ~ PART I

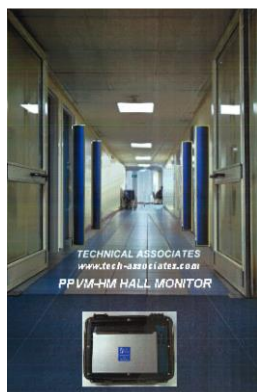
- DETECTS GAMMA **OPTIONAL**: ALPHA, BETA & NEUTRON
- DETECTS 1 μCi of Cs-137 OR LOWER
- DETECTS AT 7 $\mu\text{R/hr}$ CHANGE IN 1 SECOND – USER SETTABLE
- HIGH SENSITIVITY DUE TO LARGE SURFACE AREA (500 in²) OF PLASTIC SCINTILLATION PANELS
- **OPTIONAL**: RADIATION DETECTORS - UNDERFOOT

CHEMICAL – TWO MODELS ~ PART II

- DETECTS AIRBORNE CWAs, IRRITANTS, NERVE GASES, DANGEROUS CHEMICALS



**Designed to Meet
FEMA & NRC Needs for
Large Scale Evacuation
of Contaminated Area or
Screening.**



**PPVM-TA SERIES
HALLWAY
INSTALLATION**



**PPVM-TA SERIES
TYPICAL PPVM-TA-3
(3) DETECTORS IN EACH TOWER**

**THIS PICTURE DOES NOT
REPRESENT THE PPVM-TA-5ES
(5) DETECTORS IN EACH TOWER**



TECHNICAL ASSOCIATES

7051 ETON AVENUE, CANOGA PARK, CALIFORNIA 91303

PHONE: 818-883-7043 | FAX: 818-883-6103

SALES@TECH-ASSOCIATES.COM | TECH-ASSOCIATES.COM | USNUCLEARCORP.COM

DIVISION OF



USNUCLEARCORP

OTCQB:UCLE

**PERSONNEL, VEHICLE, WASTE/TRASH
RADIATION AND CHEMICAL PORTAL / INTERDICTION MONITOR
PORTABLE or FIXED,**

Model Series ~ PPVM-TA SERIES

PPVM-TA ~ PPVM-TA-P ~ PPVM-TA-1 ~ PPVM-TA-3 ~ PPVM-TA-5ES

PPVM-TA-CHEM-WDE ~ PPVM-TA-CHEM-IWC

APPLICATION:

INTRODUCTION PART I

PPVM-TA SERIES INTERDICTION CONTROL

PERSONNEL, VEHICLE, WASTE / TRASH

RADIATION DETECTION - INDOOR AND/ OR OUTDOOR USE

PPVM-TA SERIES RADIATION DETECTION MODELS (Installation, Application):

- (2) PLASTIC SCINTILLATION PANELS – (2) Towers
ONE 500 in² IN EACH TOWER (**PPVM-TA-P**) – Portable, stand alone; entry portals, driveways, parking lots
- (2) PLASTIC SCINTILLATION PANELS – (2) Towers
ONE 500 in² IN EACH TOWER (**PPVM-TA**) – Installed, hallways, doorways, etc.
- (3) PLASTIC SCINTILLATION PANELS – (2) Towers
THREE 500 in² IN EACH TOWER (**PPVM-TA-3**) – Installed, laundry or equipment carts
- (5) PLASTIC SCINTILLATION PANELS – (2) Towers
FIVE 500 in² IN EACH TOWER (**PPVM-TA-5ES**) – Installed, laundry or equipment carts
- (1) PLASTIC SCINTILLATION PANEL ONE 500 in² IN ONE TOWER (**PPVM-TA-1**) – Portable, stand alone

PPVM-TA-3 AND PPVM-TA-5ES - Installed

- **OPTIONAL:** OVERHEAD DETECTOR AND/OR UNDERFOOT DETECTOR
- **OPTIONAL:** CHEMICAL DETECTORS

NOTE: Volume is not the key factor for sensitivity, it is the surface area of the detector. This is why TA uses scintillation panels instead of cylindrical detectors. The detection sensitivity is not in volume but the surface area.

APPLICATION:

PPVM-TA Series Interdiction Monitor

Use for pedestrian walkways indoors and outdoors, trash and waste sites, and scrap metal facilities and vehicle traffic points of entry. Anywhere radioactive material may be present.



TECHNICAL ASSOCIATES

7051 ETON AVENUE, CANOGA PARK, CALIFORNIA 91303

PHONE: 818-883-7043 | FAX: 818-883-6103

SALES@TECH-ASSOCIATES.COM | TECH-ASSOCIATES.COM | USNUCLEARCORP.COM

DIVISION OF



USNUCLEARCORP

OTCQB:UGLE

PERSONNEL, VEHICLE, WASTE/TRASH RADIATION AND CHEMICAL PORTAL / INTERDICTION MONITOR PORTABLE or FIXED,

Model Series ~ PPVM-TA SERIES

PPVM-TA ~ PPVM-TA-P ~ PPVM-TA-1 ~ PPVM-TA-3 ~ PPVM-TA-5ES

PPVM-TA-CHEM-WDE ~ PPVM-TA-CHEM-IWC

DESCRIPTION:

RADIATION INTERDICTION – PART I:

The **PPVM-TA Series** are re-positional monitors with two towers. Detectors contain highly sensitive scintillation PANELS and are portable as stand-alone or installed on each side of hallway or doorway AT ANY WIDTH and may be remounted in alternate locations. The **PPVM-TA Series** system is a high sensitivity Gamma Monitoring system with **OPTIONAL** detection for Beta and /or Neutron, plus hand-held Alpha Beta clothing “frisker”.

Radiation contamination on people, in containers, or vehicles can be achieved with two different options: in a stop & count or on a non-pause basis. Greater sensitivity is achieved for people or vehicles with a stop & count approach although it takes a little longer. Rate of change in radiation this instrument will reliably pick up contamination as it passes through or near the monitor. Background is continually updated and subtracted thus giving net reading for person or vehicle. Has audio and visual alarms, alarming beacon, and video capture.

NOTE: Scintillation panels are highly sensitive compared to cylindrical crystals due to the wider surface area.

CHEMICAL INTERDICTION PART II:

Two models of chemical sensors are available with different capabilities and sensitivities. They are tower mounted and detect airborne chemicals with identification: CWAs, IRRITANTS, NERVE GASES, DANGEROUS CHEMICALS. These chemical sensors can be deployed in tandem with the radiation detectors or as stand-alone detection.

GENERAL INFORMATION - PPVM-TA Series of instrumentation.

The **PPVM-TA Series** is versatile with its radiation monitoring instrument models and can also accommodate chemical sensors providing an expanded interdiction capability.

Designed: for rugged outdoor use as well as indoors.

Portable: Fast set-up at the road side or in a parking lot, mounted to a fence post or stand alone in an indoor or outdoor area.

Installed: Wall or otherwise mounted in a fixed position.

Alarms: Rate of change in electronics via audio and visual alarms.

Power: Operates on built-in rechargeable batteries or 110/220 AC.

OPTIONS: See variety of options in Features Section page 1.

SPECIFICATIONS:

RADIATION DETECTORS:

PPVM-TA SERIES – INSTALLED ~ WALL MOUNT / DOORWAY / OTHER FIXED LOCATIONS

PPVM-TA-P – PORTABLE – STAND ALONE

PPVM-TA-1 – PORTABLE – ONE TOWER – ONE DETECTOR

DETECTORS (PPVM-TA SERIES):

(2) Towers with (1) detector in each tower.

Total of (2) detectors. Premium Plastic Scintillation panels with a wide temperature range

12”w x 1.5”d x 44”h. (30.4 cm x 3 cm x 112 cm)

- **Volume (PPVM-TA Series):** 792 in³ per detector.
- **Surface Area (PPVM-TA Series):** 500 in² per detector.



TECHNICAL ASSOCIATES

7051 ETON AVENUE, CANOGA PARK, CALIFORNIA 91303

PHONE: 818-883-7043 | FAX: 818-883-6103

SALES@TECH-ASSOCIATES.COM | TECH-ASSOCIATES.COM | USNUCLEARCORP.COM

DIVISION OF



USNUCLEARCORP

OTCQB:UGLE

PERSONNEL, VEHICLE, WASTE/TRASH RADIATION AND CHEMICAL PORTAL / INTERDICTION MONITOR PORTABLE or FIXED,

Model Series ~ PPVM-TA SERIES

PPVM-TA ~ PPVM-TA-P ~ PPVM-TA-1 ~ PPVM-TA-3 ~ PPVM-TA-5ES

PPVM-TA-CHEM-WDE ~ PPVM-TA-CHEM-IWC

- **Sensitivity:** Easily Detects 1 μ Ci of Cs-137 and below anywhere within portal based on 15 second count and 34" tower separation. Background up to 1 mR/hr.

DETECTOR (PPVM-TA-3):

(2) Towers with (3) detectors in each tower. (1) Overhead detector
Total of (7) detectors. Premium Plastic Scintillation panels with a wide temperature range
12"w x 1.5"d x 44"h. (30.4 cm x 3 cm x 112 cm)

- **Sensitivity:** Easily detects 50 nCi of Cs-137 anywhere within portal based on 15 second count. Background up to 1 mR/hr.

DETECTOR (PPVM-TA-5ES):

(2) Towers with (5) detectors in each tower. (1) Overhead detector
Total of (11) detectors. Premium Plastic Scintillation panels with a wide temperature range.
12"w x 1.5"d x 44"h. (30.4 cm x 3 cm x 112 cm)

- **Sensitivity:** Easily detects 50 nCi of Cs-137 or above, anywhere within portal with less than 15 second count. Background up to 1 mR/hr.

PPVM-TA Series:

- **Dose Rate Range:** 1 μ R/hr to 1 mR/hr.
- **Energy Range:** **Gamma:** 80 KeV to 6 MeV. **Optional:** down to 40 KeV
Optional: Beta: above 1 MeV, such as P32, Sr90 Y90, & N16.

ALARMS

- **Rate of Change Design:** Fast Alarming
- **Alarm:** Alarm Beacon
- **False Alarm:** <1 in 1,000 passes
- **High Level Alarm:** Flashing red light and intermittent 2900 Hz tone. (90 dB)
Volume adjustable / On/Off switch.
- **Alarm Set: PPVM-TA Series:** User Settable

SYSTEM POWER:

- **Power Requirements:** Choice of AC or DC Operation or
- **Battery Back Up** Lithium Ion 12 Volt Battery. **OPTIONAL:** 24, or 48 V
Built in rechargeable batteries
Smart Trickle Charge when Plugged into wall socket 110/220 AC
- **Display / Read Out:** Local touch screen display plus Remote display
- **Power Recharge Cable:** 6 ft. cable or user specified. Three Prong grounded connector.
- **Operating Temperature:** 32° to 135° F (0° to 55° C) with Webcam



TECHNICAL ASSOCIATES

7051 ETON AVENUE, CANOGA PARK, CALIFORNIA 91303

PHONE: 818-883-7043 | FAX: 818-883-6103

SALES@TECH-ASSOCIATES.COM | TECH-ASSOCIATES.COM | USNUCLEARCORP.COM

DIVISION OF



USNUCLEARCORP

OTCQB:UCLE

PERSONNEL, VEHICLE, WASTE/TRASH RADIATION AND CHEMICAL PORTAL / INTERDICTION MONITOR PORTABLE or FIXED,

Model Series ~ PPVM-TA SERIES

PPVM-TA ~ PPVM-TA-P ~ PPVM-TA-1 ~ PPVM-TA-3 ~ PPVM-TA-5ES

PPVM-TA-CHEM-WDE ~ PPVM-TA-CHEM-IWC

- Operating Humidity:** 20% - 85% non-condensing with Webcam
5% - 95% non-condensing without Webcam
- **Self-Test:** For: Low Battery, Loss of Signal, and High Background.
 - **Status Indicators:** "Ready" - "Counting" - "Clean-OK" - "High Alarm"
"Count Incomplete".
 - **Count Time:** Stop & Count mode– User Settable. (Pass Through not needed)
 - **Background Compensation:** Background is continually updated and subtracted.
(User can set parameters.)
 - **Communications:** Built-in serial ports and Ethernet.
 - **Count Start:** Sensor trips automatically when person or vehicle enters portal and counting starts.
 - **Portable Set-Up:** **PPVM-TA-P** One person can set-up unit in about 2 min.
 - **Cables:** User specified lengths

CONSTRUCTION:

- **Electronics:** Hardened against lightning strikes and ESD
- **Electronics:** Protected components from harsh environments / chemical contaminants
- **Connections / Terminals:** Housed in NEMA enclosures with rating 3
- **Environment:** Detector Towers and Electronics resistant to humidity, seismic vibration, radio/frequency or magnetic effects interference.
- **Temperature:** Wide Range. No need for heating/cooling apparatus.
- **Tower Cases:** Coated to prevent environmental damage and scratches.
- **Portable Cases:** Weather-tight NEMA rated tough, durable, lightweight.
A "tongue-in-groove" continuous O"-ring system makes the case water, moisture, and dust tight,
- **Wall Mount Cases:** Constructed of heavy 1.5 mm steel. Fits between wall studs, or stands on the floor. Full length piano hinge door for easy access, rugged construction prevents accidental damage.
- **Repair:** Field repair without removal of system
- **Width:** Installed: Minimum. ±34" portal. Portable ±34" to 95" pedestrian or per vehicle traffic. User Adjustable.



TECHNICAL ASSOCIATES

7051 ETON AVENUE, CANOGA PARK, CALIFORNIA 91303

PHONE: 818-883-7043 | FAX: 818-883-6103

SALES@TECH-ASSOCIATES.COM | TECH-ASSOCIATES.COM | USNUCLEARCORP.COM

DIVISION OF



USNUCLEARCORP

OTCQB-UCLF

PERSONNEL, VEHICLE, WASTE/TRASH RADIATION AND CHEMICAL PORTAL / INTERDICTION MONITOR PORTABLE or FIXED,

Model Series ~ PPVM-TA SERIES

PPVM-TA ~ PPVM-TA-P ~ PPVM-TA-1 ~ PPVM-TA-3 ~ PPVM-TA-5ES

PPVM-TA-CHEM-WDE ~ PPVM-TA-CHEM-IWC

2

DIMENSIONS & WEIGHT:

WEIGHT & DIMENSIONS

PPVM-TA and PPVM-TA-P:

- **Dimensions Typical Size:** **Control Box:** 16" h x 20"w x 10"d(40 cm x 50.8 cm x 25 cm) plus Alarm Beacon
- **Case Detector Towers:** 54" h x 15.5" w x 7" d. (136 cm x 38 cm x 18 cm)
- **Optional:** Alternate Packaging.
- **Shipping Weight - Portable:** **PPVM-TA-P:**150 lbs. (Lighter Less Sensitive Models Also Available.)
- **Shipping Weight – Wall Mount:** **PPVM-TA:**200 lbs. (Lighter Less Sensitive Models Also Available.)
- **Carrying Weight Portable:** **PPVM-TA-P:** Control Box: 18 lbs. Each Tower: 55 lbs. (Case with Built-in Wheels & Handles.

WEIGHT & DIMENSIONS:

PPVM-TA-3 and PPVM-TA-5ES:

Dimensions Typical Size:

Control Box / Computer: 16" x 20" x 10" (40 cm x 50.8 cm x 25.4 cm), plus Alarm Beacon

System Towers (2):

Nominal Size of system

Outside:

65" W x 78"H x 69" L (165 cm x 198 cm x 175 cm) each

Inside:

32.5" W x 76" H x 69"L (82.5 cm x 193 cm x 175 cm) each; width adjustable

System Weight:

Under 3,000 lbs (1,361 kg)

Platform:

Stainless Steel

Shielding:

3/8" steel each tower and **optional** overhead detector

Optional: 1/2" Pb or 3/4" steel

OPTIONAL:

- **Check Source:** **Cs 137;** or other license exempt check sources.
- **Additional Relays:** 5A SPDT to operate other circuits.
- **Additional Remote Alarm:** RAL-3W flasher, siren.
- **Web Cam:** Real-time Capture and Display at Time of Alarm
- **Video:** License Plate Capture
- **Wireless Remote Notification:** Phone, Email, Text, Etc.
- **Remote Display:** Data Display in Adjacent Building or in Area a Distance from PPVM-TA Detector System Installation/Application
- **Chemical Detectors** See Chemical List



TECHNICAL ASSOCIATES

7051 ETON AVENUE, CANOGA PARK, CALIFORNIA 91303

PHONE: 818-883-7043 | FAX: 818-883-6103

SALES@TECH-ASSOCIATES.COM | TECH-ASSOCIATES.COM | USNUCLEARCORP.COM

DIVISION OF



USNUCLEARCORP

OTCQB-UCLF

**PERSONNEL, VEHICLE, WASTE/TRASH
RADIATION AND CHEMICAL PORTAL / INTERDICTION MONITOR
PORTABLE or FIXED,**

Model Series ~ PPVM-TA SERIES

PPVM-TA ~ PPVM-TA-P ~ PPVM-TA-1 ~ PPVM-TA-3 ~ PPVM-TA-5ES

PPVM-TA-CHEM-WDE ~ PPVM-TA-CHEM-IWC

INTRODUCTION PART II

PPVM-TA-CHEM SERIES INTERDICTION CONTROL

PERSONNEL, VEHICLE, WASTE / TRASH

CHEMICAL DETECTION - INDOOR AND/ OR OUTDOOR USE

**CHEMICAL DETECTION
WAR GASES, NERVE GASES, IRRITANTS, DANGEROUS CHEMICALS**

AGENTS AND PRECURSORS	MAJOR DETECTION	PPVM-TA-CHEM-WDE	PPVM-TA-CHEM-IWC
WAR GASES		YES	YES
	CWA	YES	YES
NERVE GASES		YES	YES
POISONS		YES	YES
	NOVICHOK	YES	
	SARIN	YES	YES
	SULFUR MUSTARD	YES	YES
	VS VX	YES	
	CYANIDE		YES
IRRITANTS	PEPPER SPRAY	YES	YES
	MACE	YES	YES
	TEAR GAS		YES
DANGEROUS CHEMICALS	TIC -TOXIC INDUSTRIAL CHEMICALS	YES	YES
	CHLORINE	OPTIONAL – YES	YES
	AMMONIA	OPTIONAL – YES	YES
	SULFUR DIOXIDE	OPTIONAL – YES	YES
	CARBON MONOXIDE	OPTIONAL – YES	YES
	FORMIC ACID	OPTIONAL – YES	YES
	PHOSPHORUS	OPTIONAL - YES	YES
	DIESAL FUMES/PARTICULATES	OPTIONAL - YES	OPTIONAL - YES
	METHANE	OPTIONAL - YES	OPTIONAL - YES
	HYDROGEN SULFIDE	OPTIONAL - YES	OPTIONAL - YES
	CARBON DIOXIDE	OPTIONAL - YES	OPTIONAL - YES
	NITROGEN DIOXIDE	OPTIONAL - YES	OPTIONAL - YES
	VOC	OPTIONAL - YES	OPTIONAL - YES



TECHNICAL ASSOCIATES

7051 ETON AVENUE, CANOGA PARK, CALIFORNIA 91303

PHONE: 818-883-7043 | FAX: 818-883-6103

SALES@TECH-ASSOCIATES.COM | TECH-ASSOCIATES.COM | USNUCLEARCORP.COM

DIVISION OF



USNUCLEARCORP

OTCQB-UCLC

**PERSONNEL, VEHICLE, WASTE/TRASH
RADIATION AND CHEMICAL PORTAL / INTERDICTION MONITOR
PORTABLE or FIXED,**

Model Series ~ PPVM-TA SERIES

PPVM-TA ~ PPVM-TA-P ~ PPVM-TA-1 ~ PPVM-TA-3 ~ PPVM-TA-5ES

PPVM-TA-CHEM-WDE ~ PPVM-TA-CHEM-IWC

CHEMICAL DETECTION – EXPLOSIVES AND DRUGS			
AGENTS AND PRECURSORS	MAJOR DETECTION	PPVM-TA-CHEM-WDE	PPVM-TA-CHEM-IWC
EXPLOSIVES	EXPLOSIVES	YES	
	LEL EXPLOSIVE LEVEL		YES
DRUGS	METHAMPHETAMINE	YES	
	FENTANYL	YES	

ADDITIONAL OPTIONS:

- 220 V, 50-60 Hz.- PPVM-TA SERIES
- Additional detectors: Underfoot - RADIATION
- Alternate RADIATION detector types:
 - Other size plastic scintillators, NaI(Tl) Scintillators, or BGO crystal. RADIATION
- Specific detectors e.g., for Plutonium or Neutron or Alpha/Beta emitters - RADIATION
- Additional Photo Cell sensors(s)
 - Measure speed vehicle passing through portal - PPVM-TA SERIES
- Wireless operation. - PPVM-TA SERIES
- Additional Cameras - PPVM-TA SERIES

**PORTABLE~ PPVM-TA-P
RADIATION AND / OR CHEMICAL**

- Battery or AC Operation.
- Each detector is housed in weather proof high impact plastic case with sturdy built-in handles and wheels.
- Detectors are shipped with Deployment Stand (**Model DS-4**).
- Detector cases are industrial grade, easy to use, reusable straps.
 - Available as a Fixed Vehicle Unit (**Model - VMF-TA**), in a Metal Housing.
See **Model ~ [VMF-TA Series](#) spec sheet.**



TECHNICAL ASSOCIATES

7051 ETON AVENUE, CANOGA PARK, CALIFORNIA 91303

PHONE: 818-883-7043 | FAX: 818-883-6103

SALES@TECH-ASSOCIATES.COM | TECH-ASSOCIATES.COM | USNUCLEARCORP.COM

DIVISION OF



USNUCLEARCORP

OTCQB-UCLF

**PERSONNEL, VEHICLE, WASTE/TRASH
RADIATION AND CHEMICAL PORTAL / INTERDICTION MONITOR
PORTABLE or FIXED,**

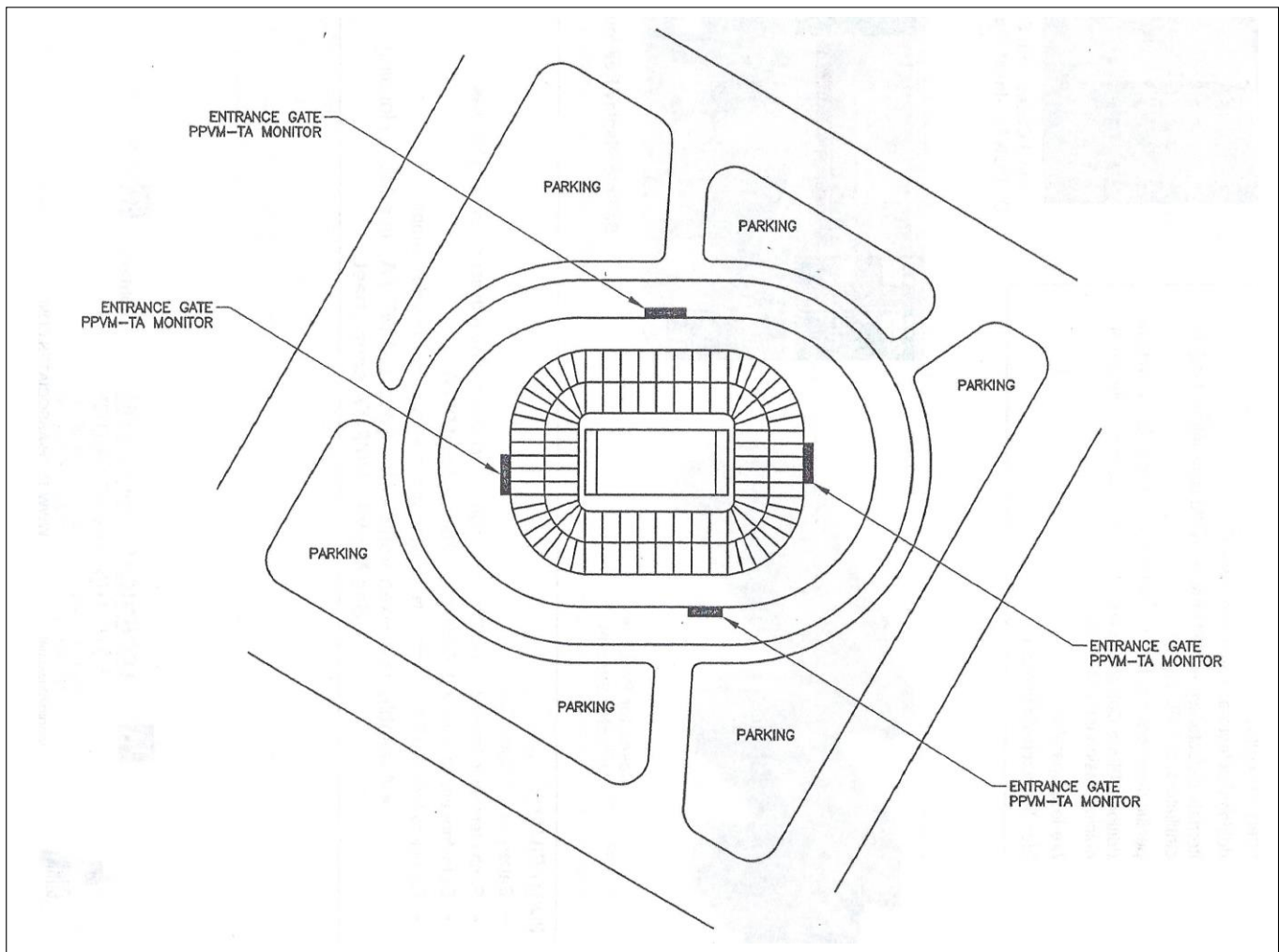
Model Series ~ PPVM-TA SERIES

PPVM-TA ~ PPVM-TA-P ~ PPVM-TA-1 ~ PPVM-TA-3 ~ PPVM-TA-5ES

PPVM-TA-CHEM-WDE ~ PPVM-TA-CHEM-IWC

**SAMPLE LAYOUT FOR POSITIONING PPVM-TA AT A STADIUM
TO STRENGTHEN STADIUM SECURITY**

AERIAL VIEW



TECHNICAL ASSOCIATES

7051 ETON AVENUE, CANOGA PARK, CALIFORNIA 91303

PHONE: 818-883-7043 | FAX: 818-883-6103

SALES@TECH-ASSOCIATES.COM | TECH-ASSOCIATES.COM | USNUCLEARCORP.COM

DIVISION OF



USNUCLEARCORP

OTCQB:UCLE

**PERSONNEL, VEHICLE, WASTE/TRASH
RADIATION AND CHEMICAL PORTAL / INTERDICTION MONITOR
PORTABLE or FIXED,**

Model Series ~ PPVM-TA SERIES

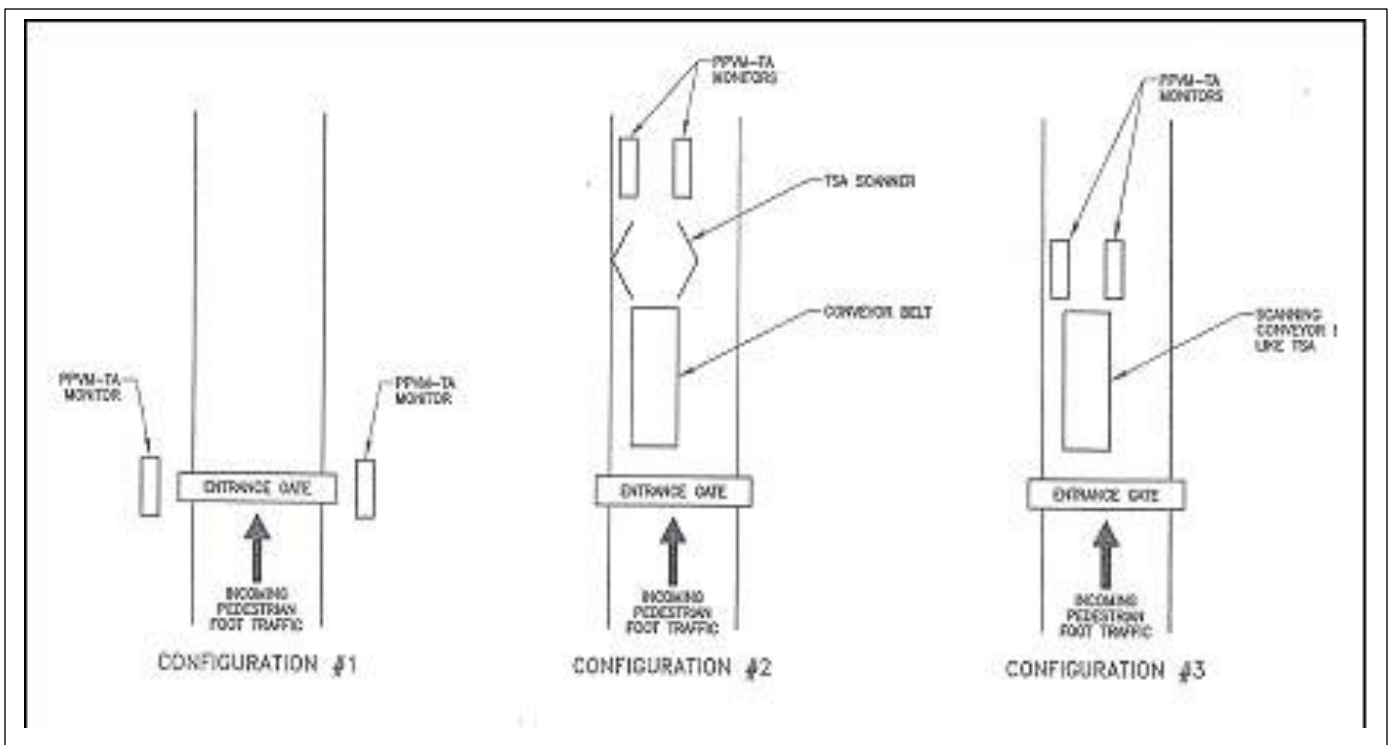
PPVM-TA ~ PPVM-TA-P ~ PPVM-TA-1 ~ PPVM-TA-3 ~ PPVM-TA-5ES

PPVM-TA-CHEM-WDE ~ PPVM-TA-CHEM-IWC

AERIAL VIEW

VARIOUS CONFIGURATIONS - PPVM-TA-P SERIES

SECURITY STATION POSITIONING



TECHNICAL ASSOCIATES

7051 ETON AVENUE, CANOGA PARK, CALIFORNIA 91303

PHONE: 818-883-7043 | FAX: 818-883-6103

SALES@TECH-ASSOCIATES.COM | TECH-ASSOCIATES.COM | USNUCLEARCORP.COM

DIVISION OF



USNUCLEARCORP

OTCQB:UCLE

PERSONNEL, VEHICLE, WASTE/TRASH RADIATION AND CHEMICAL PORTAL / INTERDICTION MONITOR PORTABLE or FIXED,

Model Series ~ PPVM-TA SERIES

PPVM-TA ~ PPVM-TA-P ~ PPVM-TA-1 ~ PPVM-TA-3 ~ PPVM-TA-5ES

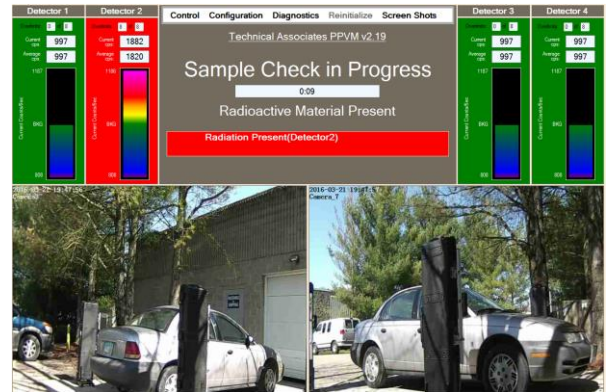
PPVM-TA-CHEM-WDE ~ PPVM-TA-CHEM-IWC



Steel Cases with Stands
OPTIONAL –Inset Wall Mount



**Cases for Portable
Detector System**



Sample Display Readout



TECHNICAL ASSOCIATES

7051 ETON AVENUE, CANOGA PARK, CALIFORNIA 91303

PHONE: 818-883-7043 | FAX: 818-883-6103

SALES@TECH-ASSOCIATES.COM | TECH-ASSOCIATES.COM | USNUCLEARCORP.COM

DIVISION OF

